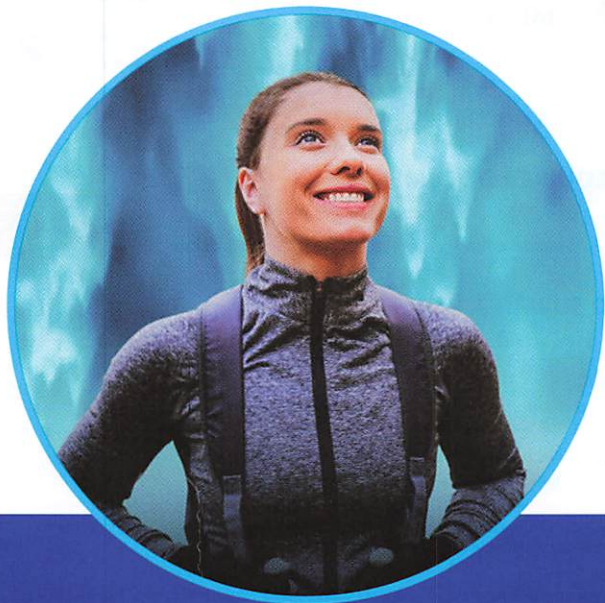


Alcon
WATERINNOVATIONS™



NEW WEARER REBATE

Valid on purchases made July 1, 2024 – December 31, 2024

NEW WEARERS CAN
SAVE UP TO
\$200*
ON CONTACT LENSES

YOUR REBATE CODE IS:
NWAC-242H

NEW WEARERS ONLY

Valid on purchases made from your eye care provider
July 1, 2024 – December 31, 2024



Submit online at **AlconChoice.com**
from your computer or mobile device.
Easy Submission, Fast Processing and 24/7 Tracking

* Savings via online (or mail-in) rebate in the form of an Alcon Visa® Prepaid card. See full Terms and Conditions on the reverse side.

DAILIES
TOTAL 1
ONE-DAY CONTACT LENSES

TOTAL30
THIRTY-DAY CONTACT LENSES

PRECISION 1
ONE-DAY CONTACT LENSES

Purchase Dates: 07/01/2024 – 12/31/2024

Submit within **60 days** of Lens Purchase

Offer Code:
NWAC-242H



SCAN ME!

NEW WEARERS HAVE MORE OPTIONS TO SAVE WHEN PURCHASING ALCON LENSES

SINGLE PAYMENT

\$200

(eight 90 ct. boxes)

DAILIES TOTAL1®
DAILIES TOTAL1® Multifocal
DAILIES TOTAL1® for Astigmatism

BIGGEST SAVINGS

\$150

(eight 90 ct. boxes)

PRECISION1®
PRECISION1® for Astigmatism

\$75

(four 6 ct. boxes)

TOTAL30®
TOTAL30® Multifocal
TOTAL30® for Astigmatism

SAVE-AS-YOU-GO

Two boxes at a time

Up to
x4

\$25

(two 90 ct. boxes)

DAILIES TOTAL1®
DAILIES TOTAL1® Multifocal
DAILIES TOTAL1® for Astigmatism
PRECISION1®
PRECISION1® for Astigmatism

Up to
x2

\$25

(two 6 ct. boxes)

TOTAL30®
TOTAL30® Multifocal
TOTAL30® for Astigmatism

STEP 1: TO QUALIFY FOR A REBATE

- Read the full rebate terms and conditions below.
- Visit your eye care practitioner for a contact lens fitting.
- All purchases must be from the same eye care practitioner who prescribed your contacts, or from an affiliated location with that practitioner.

STEP 2: REQUIRED DOCUMENTS

Submit electronic copies of the following documents within 60 days of purchase:

- ✓ Sales Receipt ✓ Eye Exam/Lens Fitting Receipt ✓ UPC from Contact Lens Box



STEP 3: TO SUBMIT A REBATE

1. Complete the online claim form at AlconChoice.com. You are required to upload images of the documents via mobile device or computer and have a valid email address to receive claim notifications.
2. During claim submission, you will be required to select a rebate payment method that will be delivered once your rebate is approved:
 - Physical Alcon Prepaid Visa Card (mailed within 4-6 weeks)
 - Virtual Alcon Prepaid Visa Card (e-mailed within 5-7 business days)
3. You will receive a confirmation email after submission and claim status notifications from AlconChoice@360incentives.com. Please continue to monitor your claim status online to ensure your rebate is processed in a timely manner.

For help with your rebate submission, contact our toll-free support line at 1-855-344-6871

PROMOTIONAL PERIOD: JULY 1, 2024 – DECEMBER 31, 2024

PURCHASE MUST OCCUR DURING THE PROMOTIONAL PERIOD AND REBATE SUBMISSION MUST BE MADE WITHIN SIXTY (60) DAYS OF PURCHASE.

VALID ON ELIGIBLE PURCHASE MADE IN A QUALIFYING TRANSACTION FROM YOUR EYE CARE PROVIDER, OR FROM A LOCATION AFFILIATED WITH THAT PROVIDER: Offer only valid on purchases made in-office from participating Eye Care Providers. Offer not valid on purchases from Internet retailers or purchases made through large retailers including, but not limited to, Walmart® Vision Centers, Target® Optical, LensCrafters® Corporate locations, Sam's Club® Optical and Costco® Optical.

REBATE TERMS AND CONDITIONS

1. Purchase a supply of qualifying lenses between July 1, 2024 - December 31, 2024. Purchase date is determined by the date on your sales receipt. No late submissions will be accepted. 2. (A) Must be a new wearer to the qualifying lenses. (B) For purposes of this offer, a "new wearer" is a lens wearer who is new to the respective DAILIES TOTAL1, PRECISION1, or TOTAL30 brand of contact lenses that are the subject of this offer, or an existing lens wearer who switches to a different type of qualifying lenses within that same brand family. 3. Eye exam or lens fitting receipt is required. 4. Submissions must be made (and postmarked, if by mail) within sixty (60) days of lens purchase. All rebate submissions must be made by the patient or purchaser. 5. All rebate submissions require a valid rebate code and legible images of the following documentation: (A) a valid sales receipt that includes: (i) patient or purchaser name; (ii) Alcon contact lens product purchased; (iii) purchase location; (iv) number of boxes purchased; and (v) date of purchase; (B) an eye exam/lens fitting receipt with name of patient and date of exam/fitting; (C) a UPC/barcode label from one purchased product box; and (D) if submitting by mail, a completed Alcon Rebate Redemption Form. One (1) mail-in rebate per envelope. Alcon is not responsible for lost, late, illegible, postage-due or misdirected mail. We suggest that you make a copy of all rebate materials for your records. All material submitted becomes property of Alcon and will not be returned. 6. All rebate submissions are subject to purchase validation. Alcon reserves the right to request additional information in connection with each rebate submission. 7. Submission limits: (A) DAILIES TOTAL1, PRECISION1, or TOTAL30 Annual Supply limit of one annual (1) Alcon rebate per person, per 12-month period (B) DAILIES TOTAL1, PRECISION1 three (3) month supply for up to four (4) submissions per 12-month period (E) TOTAL30 six (6) month supply for up to two (2) submissions per 12-month period. Households limit shall not exceed an annual supply for up to four household members per 12-month period except where prohibited by law. 8. Valid only in the United States, and U.S. Territories (Puerto Rico, Guam and U.S. Virgin Islands). No P.O. boxes (except in ND and where required by law). Void where prohibited by law. 9. Allow 2 to 6 weeks for delivery of your rebate following receipt and verification of all required rebate documentation. Rebates are payable in the form of a Visa prepaid card. 10. Fraudulent submissions could result in federal prosecution under the U.S. Mail Fraud Statutes (18 U.S. Code Section 1341 and 1342). 11. Alcon reserves the right to cancel, modify or change this rebate program and institute fraud prevention measures at any time without notice.

NOTICE TO CONSUMERS: If you are personally filing a claim for reimbursement from a third-party payer (e.g., insurance company, employer group, flexible spending account, etc.) for the purchase of these contact lenses, your claim must be based upon your payment less the value of this rebate. If your doctor is filing the claim for reimbursement from a third-party payer on your behalf, you must notify the doctor's office of the need to deduct this rebate amount from the purchase price used in calculating the claim.

Use your Visa prepaid card anywhere Visa debit cards are accepted in the U.S. The card may not be used at any merchant, including internet and mail or telephone order merchants, outside of the U.S. Card is issued by The Bancorp Bank, Member FDIC, pursuant to a license from Visa U.S.A. Inc. Your use of the prepaid card is governed by the Cardholder Agreement, and some fees may apply. This is not a gift card. Please note that prepaid cards are subject to expiration, so pay close attention to the expiration date of the card.

©2024 Alcon Inc. US-T30-PRI-2400002

Alcon